



 **CRESCENT**®

 **Pliers**



Trusted by the Trades.

Z2 Crescent Z2 Our Best Performing Pliers Ever.

New Z2 pliers take gripping and cutting to the highest levels of performance. Innovative Z2 Auto Bite™ pliers feature one-handed automatic adjustment, making them perfect for turning work in tight spaces, while the Six Zone head of Z2 Long Nose pliers gives them the ability to cut, grip, and turn better than any long nose we've ever made. Every style in the wide Z2 line has innovative features that make it the new best performer in its class.

AUTO-BITE™

Z2 Auto-Bite Pliers

One handed automatic adjustment and slim design make these pliers perfect for work in cramped, hard to reach spaces.



Non-Marring Grip Zone
For gripping easily damaged, plated, or decorative fixtures

Slim Design

No protruding push button means less width for better access in tight spots

Aggressive Tooth Design

For maximum grip and torque transfer

"V" Jaws

Allow for firmer grip on various shapes

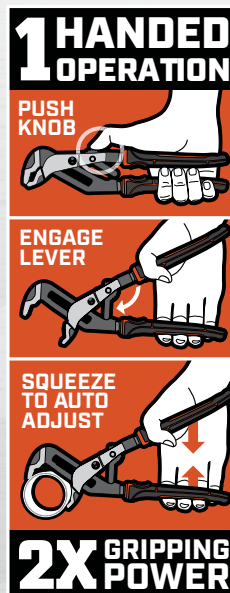


RTAB12CG

KNOB
ENGAGES OR
DISENGAGES
ADJUSTABLE
JAW

Patented Auto-Bite Lever

For one-hand automatic jaw adjustment; perfect for cramped spaces or hard-to-reach applications



Scan to see the Z2 Pliers in action

TETHER Ready™

Ergonomic Dual Material Grips with Tether Point

Increase overall comfort and safety

Pinch-Free Handles

Pinch-Stop design prevents handles from closing on palm or fingers

*Tongue and Groove, Long Nose, and Diagonal pliers are also available with dipped handles



SLIM JAW
40% GREATER ACCESS

SELF-LOCKING JAWS
SECURE GRIP

Tongue and Groove Pliers

Z2 Tongue and Groove pliers feature revolutionary K9™ 35° Angle Access Jaws so you can turn pipes, even when forced to work at an angle.

K9 JAWS
35° ANGLE
SLIM JAWS
40% GREATER ACCESS



Pinch-Free Handles
Won't close on palm or fingers

Slim Profile
40% greater access

Dual Material Grips*
For comfort and control

K9 Jaw Design
Grips even when working at an angle

RTZ210CGV

MORE
↑8
JAW POSITIONS
GRIPZONE
NON MARRING

TETHER Ready™

Long Nose Pliers

Z2 Long Nose pliers feature a Six Zone head for exceptional gripping, cutting, wire pulling, nail holding, fastener turning, and non-marring capabilities.

Laser Hardened Cutting Edges
For durability

Nail/Wire Groove
For pulling nails and wire

Torque Zone
To grip Romex® and fittings

Non-Marring Grip Area
To grip easily-marred surfaces

Cross-Hatched Jaw Surface
For bending or twisting



Z6546CG

TETHER Ready™

Dual Material Grips*
For comfort and control

Pivot Forward High Leverage Joint
For more cutting power



Fastener Grip Area
For turning hex fasteners

CUT CAPACITY
11 AWG

Diagonal Pliers

Designed for professional tradespeople, these diagonal pliers feature pivot forward design to make repetitive cuts easier for improved productivity.

Reaming Head
For deburring pipes

Laser Hardened Cutting Edges
For durability



Z5426CG

TETHER Ready™

Dual Material Grips*
For comfort and control

Pivot Forward High Leverage Joint
For more cutting power

CUT CAPACITY
7 AWG

FLUSH CUTTING

A full selection for professional users.

For pros, it's all about quality. But choice is a close second, because different jobs require different approaches. Crescent understands that, so we offer Z2 pliers in a wide assortment of types. From basic slip-joints to auto-adjusting tongue and grooves, there's a Z2 plier to meet your needs. Our dual material comfort grip pliers offer the extra advantage of having tether-ready attachment points, while our dipped handle pliers are easy to clean. And every plier comes in multiple sizes. For quality and selection, Crescent Z2 pliers are the obvious choice.



Z2 Tongue and Groove Range

Item No	Description
RTZ28CG	8" Straight Jaw T&G Cushion Grip
RTZ28CGV	8" V Jaw T&G Cushion Grip
RTZ28	8" Straight Jaw T&G Dipped Handle
RTZ28V	8" V Jaw T&G Dipped Handle
RTZ210CG	10" Straight Jaw T&G Cushion Grip
RTZ210CGV	10" V Jaw T&G Cushion Grip
RTZ210	10" Straight Jaw T&G Dipped Handle
RTZ210V	10" V Jaw T&G Dipped Handle
RTZ212CG	12" Straight Jaw T&G Cushion Grip
RTZ212CGV	12" V Jaw T&G Cushion Grip
RTZ212	12" Straight Jaw T&G Dipped Handle
RTZ212V	12" V Jaw T&G Dipped Handle
RTZ216	16" Straight Jaw T&G Dipped Handle
RTZ216V	16" V Jaw T&G Dipped Handle

Z2 Auto-Bite Range **AUTO-BITE™**

Item No	Description
RTAB6CG	Plier 6" Auto-Bite T&G Cushion Grip
RTAB8CG	Plier 8" Auto-Bite T&G Cushion Grip
RTAB10CG	Plier 10" Auto-Bite T&G Cushion Grip
RTAB12CG	Plier 12" Auto-Bite T&G Cushion Grip

Z2 Solid Joint Range

Item No	Description
Z6546CG	6" Long Nose Plier Cushion Grip
Z5426CG	6" Diagonal Cutting Plier Cushion Grip
Z6546	6" Long Nose Plier Dipped Handle
Z5426	6" Diagonal Cutting Plier Dipped Handle
Z6548CG	8" Long Nose Plier Cushion Grip
Z20508CG	8" Lineman's Plier Cushion Grip
Z5428CG	8" Diagonal Cutting Plier Cushion Grip
Z6548	8" Long Nose Plier Dipped Handle
Z20508	8" Lineman's Plier Dipped Handle
Z5428	8" Diagonal Cutting Plier Dipped Handle
Z20509CG	9.5" Lineman's Plier Cushion Grip
Z20509	9.5" Lineman's Plier Dipped Handle

Z2 Slip Joint Range

Item No	Description
HTZ26CG	6" Slip Joint Plier Cushion Grip
HTZ26	6" Slip Joint Plier Dipped Handle
HTZ28CG	8" Slip Joint Plier Cushion Grip
HTZ28	8" Slip Joint Plier Dipped Handle

Z2 Sets Range

Item No	Description
Z2SET3CG	3 Pc. Mixed Dual Material Plier Set
Z2SET5CG	5 Pc. Mixed Dual Material Plier Set
RTZ2CGSET2	8" & 12" T&G Straight Dual Material Set
RTZ2CGVSET2	10" & 12" T&G V-Jaw Dual Material Set
RTABCGSET2	10" & 12" Auto-Bite T&G Set
RTZ2SET3	8", 10", 12" T&G Straight Dipped Set
RTABCGSET3	8", 10", 12" Auto-Bite T&G Set